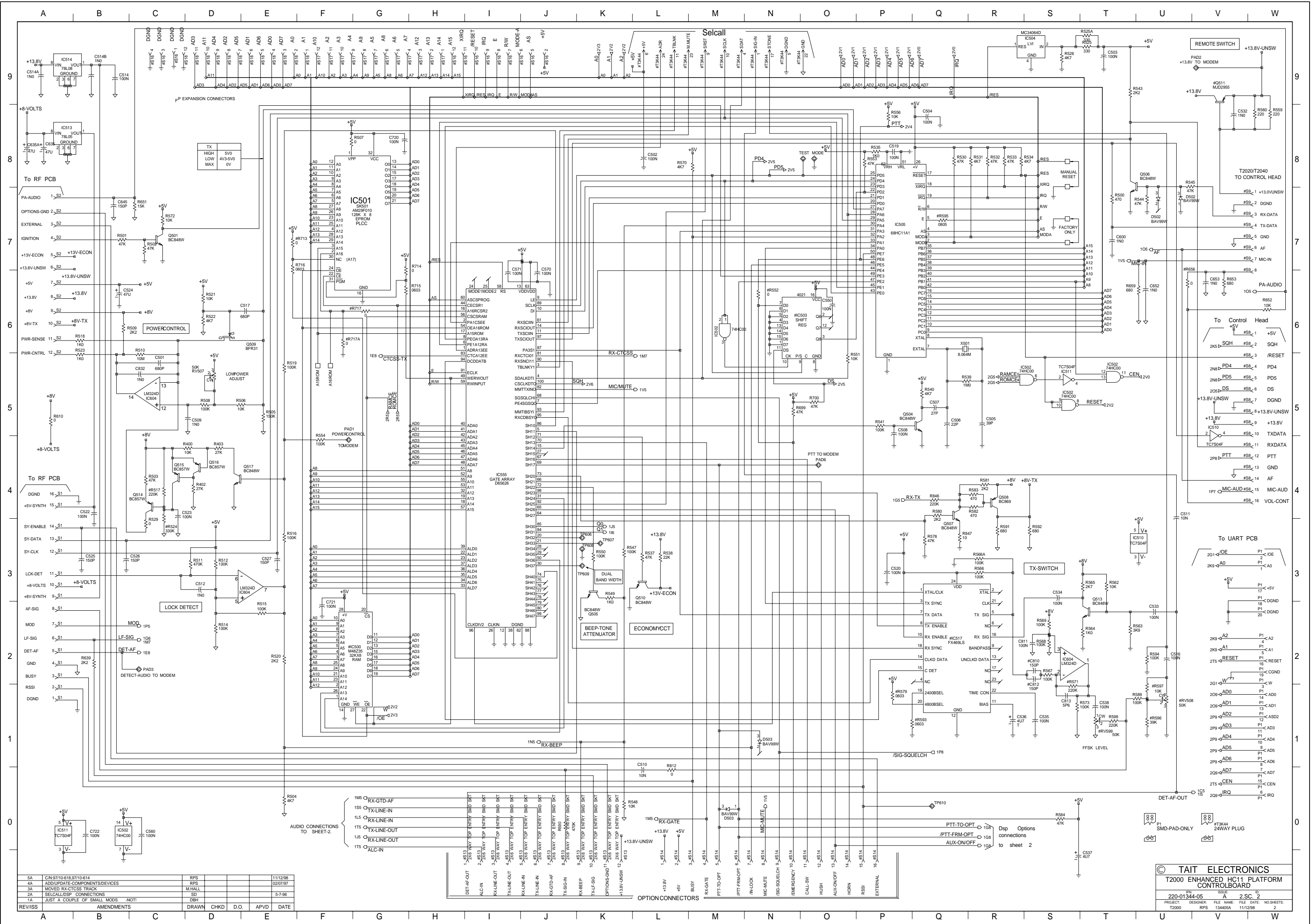


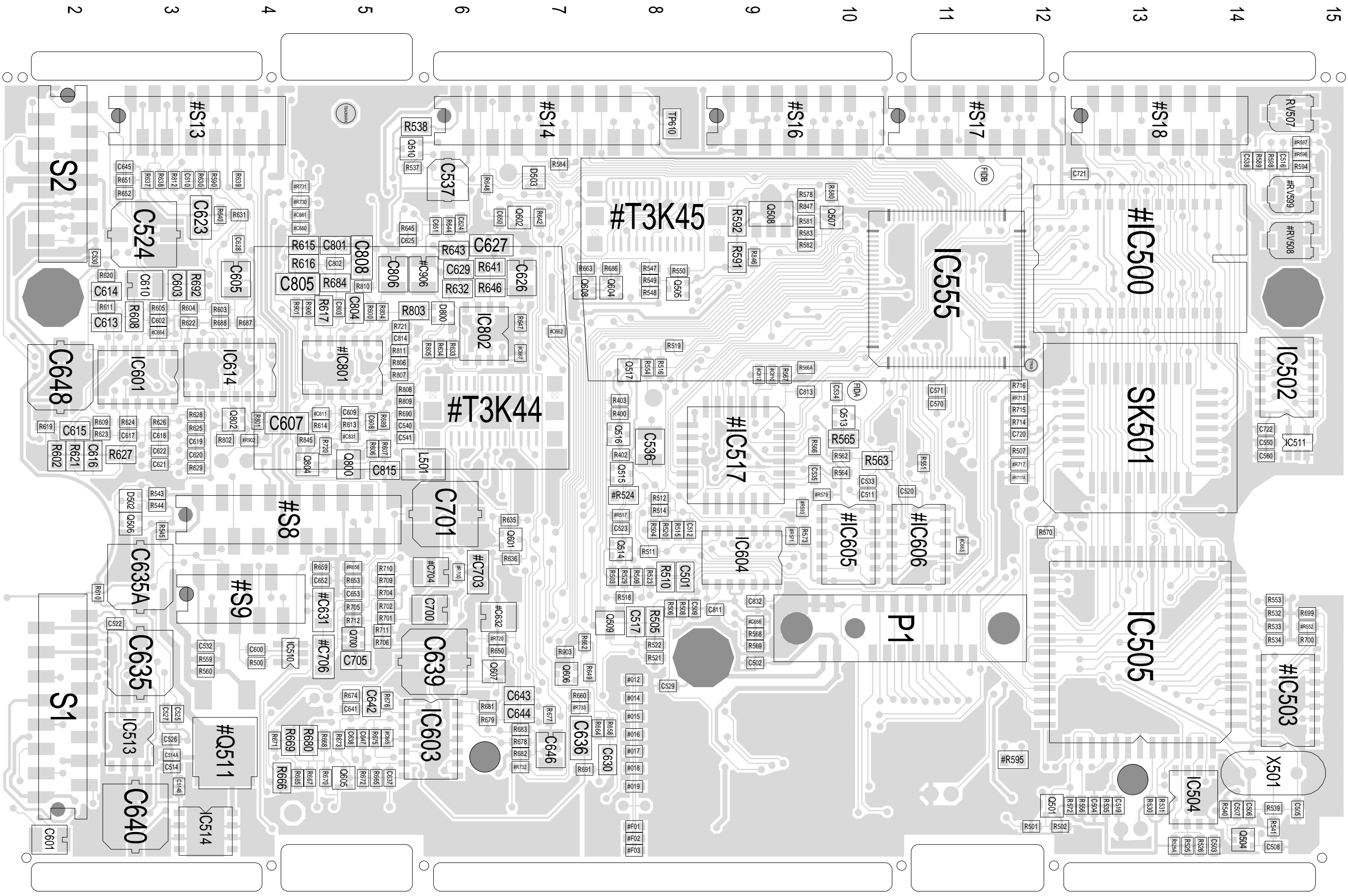
#OPTIONS	#C611	#C831	#R902	#C906	#IC801
T2050	X2E012	100p	-	0ohm	-
T203X	X2E014	-	-	-	-
T2020	X2E015	100p	-	0ohm	-
T2040	X2E016	-	-	-	-
T2060	X2E017	47p	56p	4u7	LM324

#OPTION	RAM			STADARD OR FFSK PRE-EMP			MICROPHONE			CONTROLHEAD			TRUNKED OR CONVENTIONAL OR LTR			CONNECTORS FOR A DATA RADIO			VARIANT INDICATORS																																
	#IC500	#R713	#RV508	#R596	#R597	#C810	#C812	#R571	#RV599	#C704	#C703	#R700	#R552	#IC503	#S8	#S9	#R656	#Q511	#C706	#C631	#IC517	#R717	#R717A	#P1	#S13	#S14	#S16	#S17	#S18	#T3K44	#T3K45	#012	#014	#015	#016	#017	#018	#019	#F01	#F02	#F03										
T2050	X2E012	M48Z35MH1TR	-	39KS	10KJ	-	10NJ	220KJ	50KVAR13	4U7F16Z3528	-	-	0J	-	SK8MSMD	0J	MJD2955	100NT	-	-	FX469LS	0J	-	2000UART	-	-	-	-	-	3K44OPT	3000OPT	680J	-	-	-	-	-	-	-	-	-	-	-	-	-	-	-	-	-		
T203X	X2E014	M48Z18	-	39KS	10KJ	-	10NJ	220KJ	50KVAR13	4U7F16Z3528	-	-	0J	4021BD	SK16MSMD	-	-	100NT	-	-	FX469LS	0J	-	2000UART	-	-	-	-	-	3K44OPT	3000OPT	-	2K2J	-	-	-	-	-	-	-	-	-	-	-	-	-	-	-	-	-	
T2020	X2E015	M48Z18	-	39KS	10KJ	-	10NJ	220KJ	50KVAR13	4U7F16Z3528	-	-	0J	-	SK8MSMD	0J	MJD2955	100NT	-	-	FX469LS	0J	-	2000UART	-	-	-	-	-	3K44OPT	3000OPT	-	-	4K7J	-	-	-	-	-	-	-	-	-	-	-	-	-	-	-	-	
T2040	X2E016	M48Z18	-	39KS	10KJ	-	10NJ	220KJ	50KVAR13	4U7F16Z3528	-	-	0J	-	SK8MSMD	0J	MJD2955	100NT	-	-	FX469LS	0J	-	2000UART	-	-	-	-	-	3K44OPT	3000OPT	-	-	-	6K9J	-	-	-	-	-	-	-	-	-	-	-	-	-	-	-	
T2060	X2E017	M48Z18	-	39KS	10KJ	-	10NJ	220KJ	50KVAR13	4U7F16Z3528	-	-	0J	4021BD	SK16MSMD	-	-	100NT	-	-	FX469LS	0J	-	2000UART	-	SK12MSMD	SK16MSMD	SK12MSMD	SK12MSMD	SK12MSMD	3K44OPT	3000OPT	-	-	-	-	-	-	-	-	-	-	-	-	-	-	-	-	-	-	-
T203XD	X2E018	M48Z18	-	39KS	10KJ	-	10NJ	220KJ	50KVAR13	4U7F16Z3528	-	-	0J	-	SK8MSMD	0J	MJD2955	100NT	-	-	FX469LS	0J	-	2000UART	-	SK12MSMD	SK16MSMD	SK12MSMD	SK12MSMD	SK12MSMD	3K44OPT	3000OPT	-	-	-	-	-	-	-	-	-	-	-	-	-	-	-	-	-	-	
T2040D	X2E019	M48Z18	-	39KS	10KJ	-	10NJ	220KJ	50KVAR13	4U7F16Z3528	-	-	0J	-	SK8MSMD	0J	MJD2955	100NT	-	-	FX469LS	0J	-	2000UART	-	SK12MSMD	SK16MSMD	SK12MSMD	SK12MSMD	SK12MSMD	3K44OPT	3000OPT	-	-	-	-	-	-	-	-	-	-	-	-	-	-	-	-	-		
T203A	FRENCH01	M48Z18	-	39KS	10KJ	150PJ	150PJ	470KJ	50KVAR13	4U7F16Z3528	-	-	0J	4021BD	SK16MSMD	-	-	100NT	-	-	FX469LS	0J	-	2000UART	-	SK12MSMD	SK16MSMD	SK12MSMD	SK12MSMD	SK12MSMD	3K44OPT	3000OPT	-	-	-	-	-	-	-	-	-	-	-	-	-	-	-	-	-		
T2040	FRENCH02	M48Z18	-	39KS	10KJ	150PJ	150PJ	470KJ	50KVAR13	4U7F16Z3528	-	-	0J	-	SK8MSMD	0J	MJD2955	100NT	-	-	FX469LS	0J	-	2000UART	-	SK12MSMD	SK16MSMD	SK12MSMD	SK12MSMD	SK12MSMD	3K44OPT	3000OPT	-	-	-	-	-	-	-	-	-	-	-	-	-	-	-	-	-		
T2050	FRENCH03	M48Z35MH1TR	-	39KS	10KJ	150PJ	150PJ	470KJ	50KVAR13	4U7F16Z3528	-	-	0J	-	SK8MSMD	0J	MJD2955	100NT	-	-	FX469LS	0J	-	2000UART	-	SK12MSMD	SK16MSMD	SK12MSMD	SK12MSMD	SK12MSMD	3K44OPT	3000OPT	-	-	-	-	-	-	-	-	-	-	-	-	-	-	-	-	-	-	



REV/ISS	AMENDMENTS	DRAWN	CHKD	D.O.	APVD	DATE
5A	CIN:9710-618;9710-614					11/12/98
4A	ADD UPDATE COMPONENTS/DEVICES			RPS		02/07/97
3A	MOVED RX-CTCSS TRACK			M.HALL		
2A	SECCALLOP CONNECTIONS			SD		5-7-96
1A	JUST A COUPLE OF SMALL MODS -NOT!			DBH		

© TAIT ELECTRONICS
 T2000 ENHANCED HC11 PLATFORM CONTROL BOARD
 220-01344-05
 PROJECT: 22000 RPS 134405A FILE NAME: 11/12/98 NO SHEETS: 2
 DESIGNER: M.HALL DATE: 11/12/98



1
A
2
B
3
C
4
D
5
E
6
F
7
G
8
H
9
I
10
J
11
12
13
14
15

TAIT ELECTRONICS

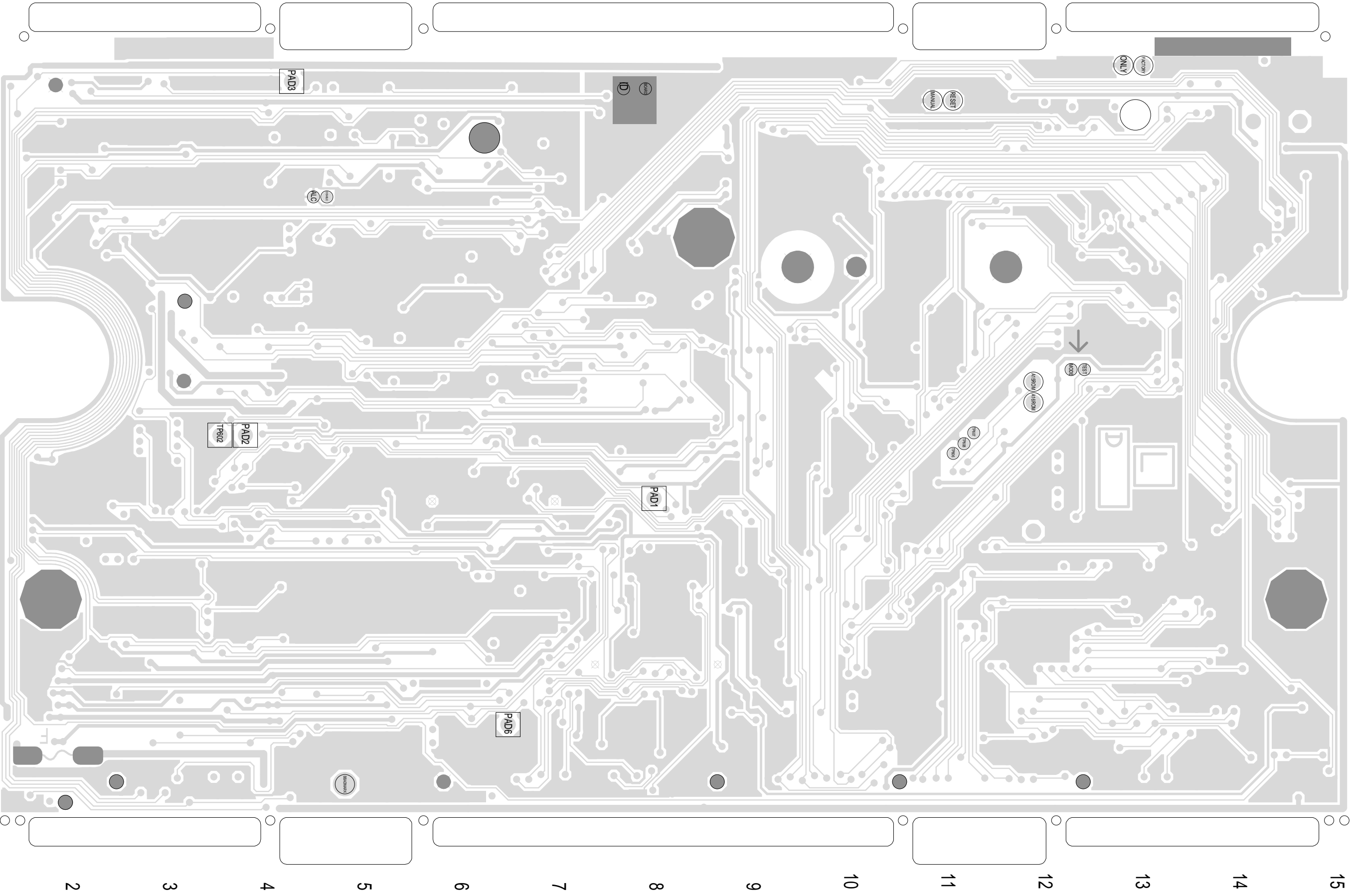
IPN: 220-01344-05

ISS: 05

ID: 1.TA

DATE: 17 Feb 1999

T2K ENHANCED PCB LAYOUT - TOP SIDE



TAIT ELECTRONICS

IPN: 220-01344-05

ISS: 05

ID: 2.BA

DATE: 17 Feb 1999

T2K ENHANCED PCB LAYOUT - BOTTOM SIDE

J H G F E D C B A 1 2 3 4 5 6 7 8 9 10 11 12 13 14 15